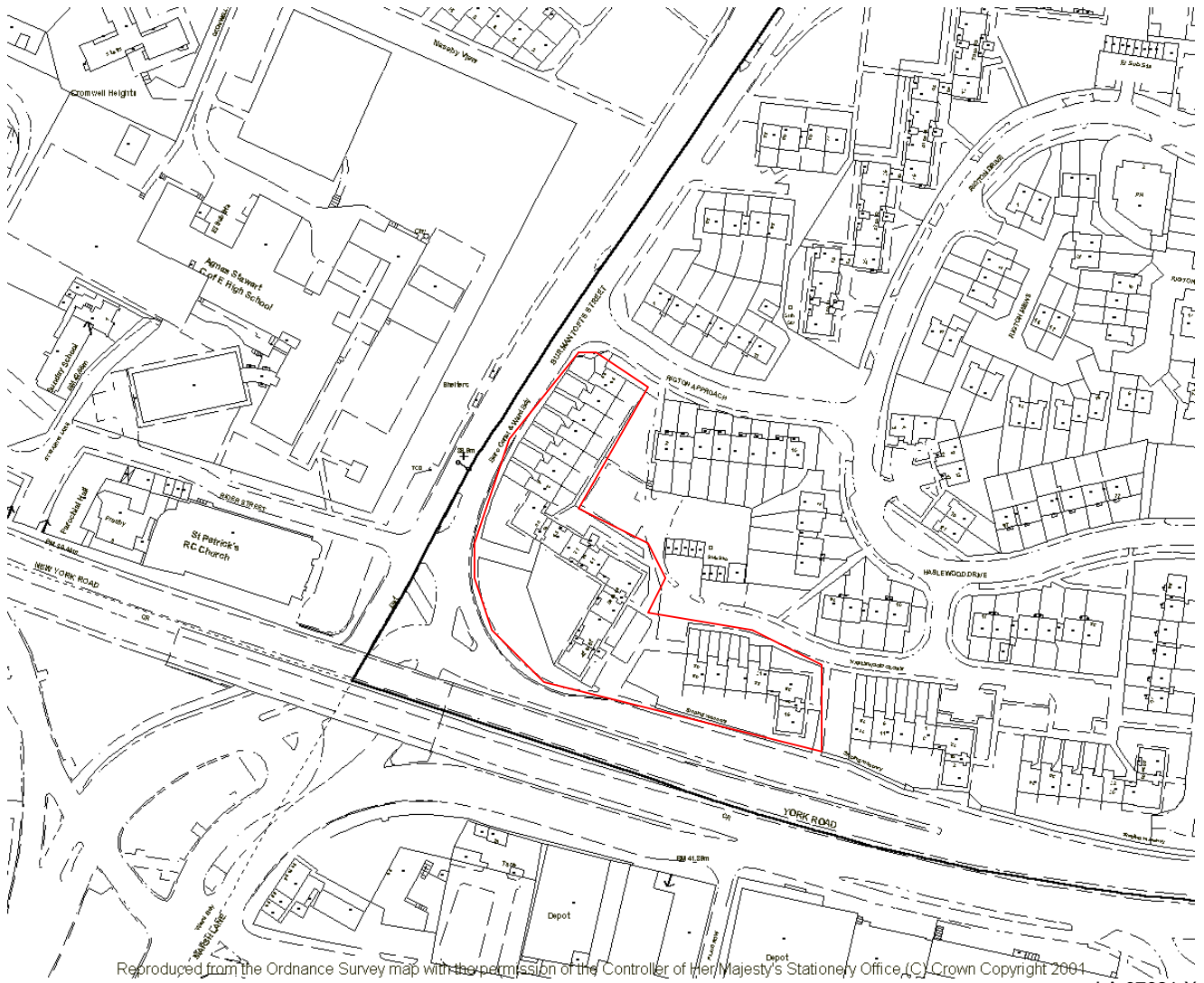


# The City of Leeds (Metropolitan District) (No.1) Air Quality Management Order, 2001

## Plan 1

Area surrounded by the red line has been designated as an Air Quality Management Area.

Scale 1:2500



Reproduced from the Ordnance Survey map with the permission of the Controller of Her Majesty's Stationery Office, (C) Crown Copyright 2001

LA 07621 X

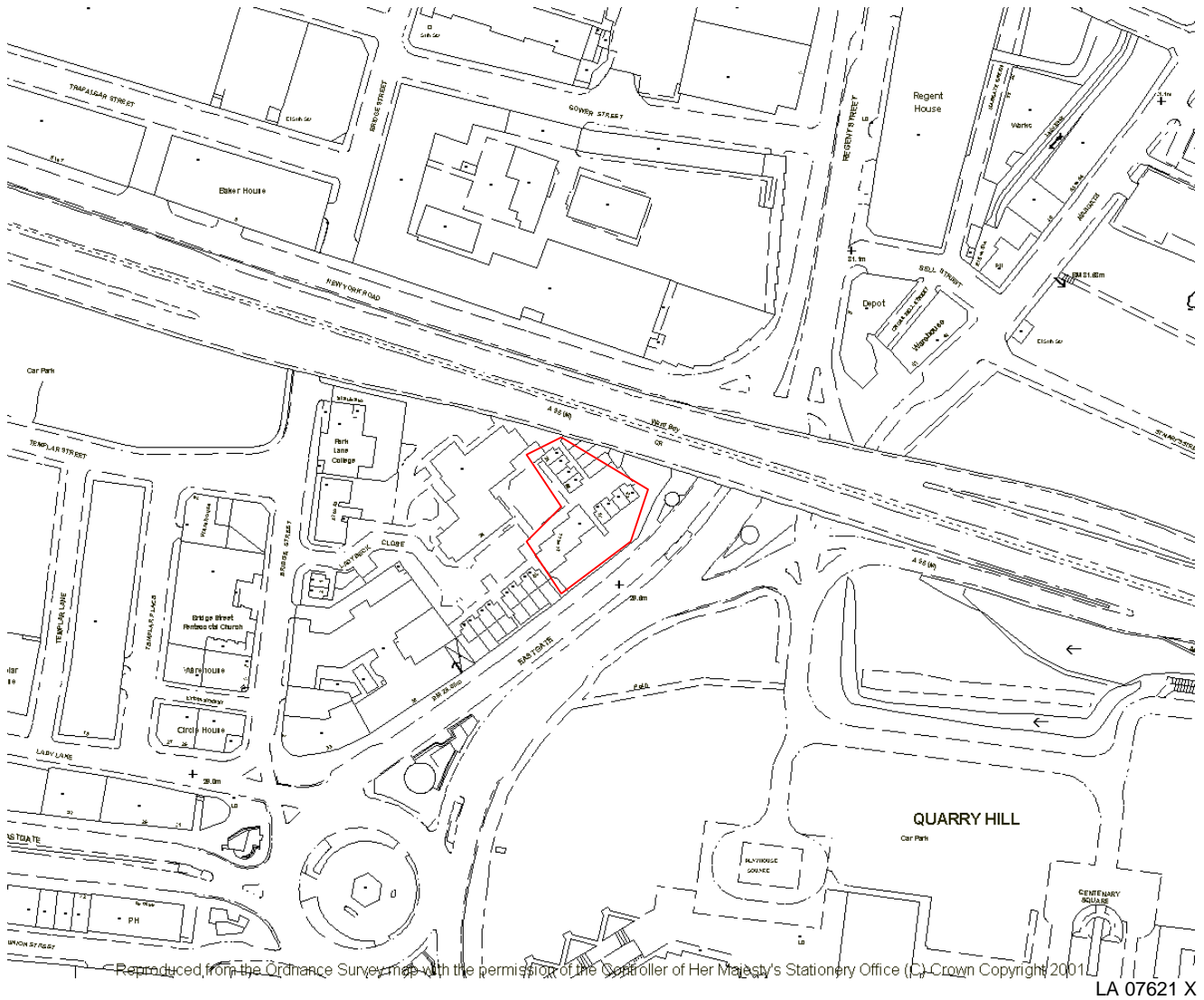
Red line includes the following properties:  
2 to 28 (evens only), Burmantofts Street  
19 to 93 (odds only), Haslewood Close

# The City of Leeds (Metropolitan District) (No.1) Air Quality Management Order, 2001

## Plan 2

Area surrounded by the red line has been designated as an Air Quality Management Area.

Scale 1:2500



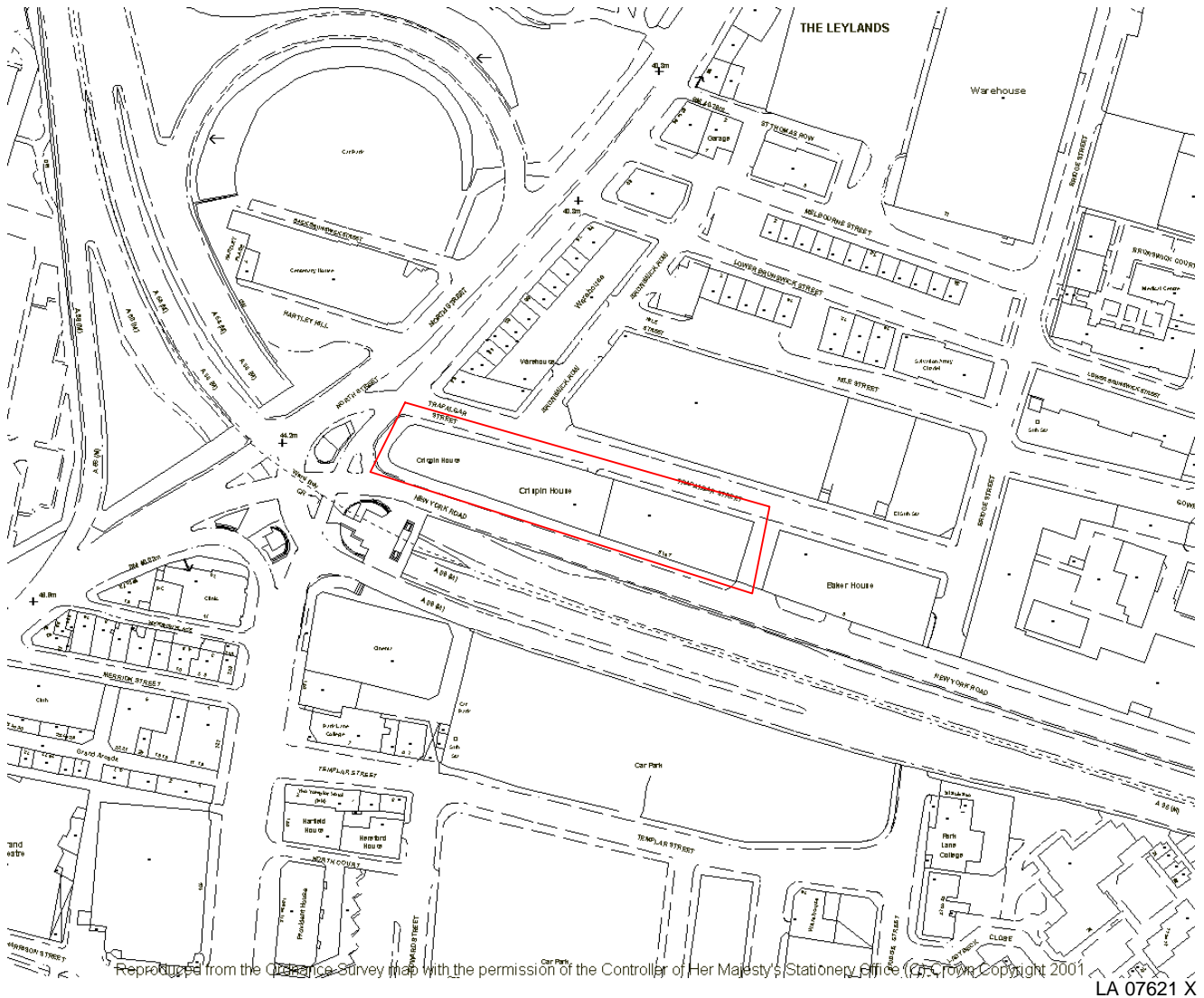
Red line includes the following properties:  
11 to 25 Ladybeck Close

# The City of Leeds (Metropolitan District) (No.1) Air Quality Management Order, 2001

## Plan 3

Area surrounded by the red line has been designated as an Air Quality Management Area.

Scale 1:2500



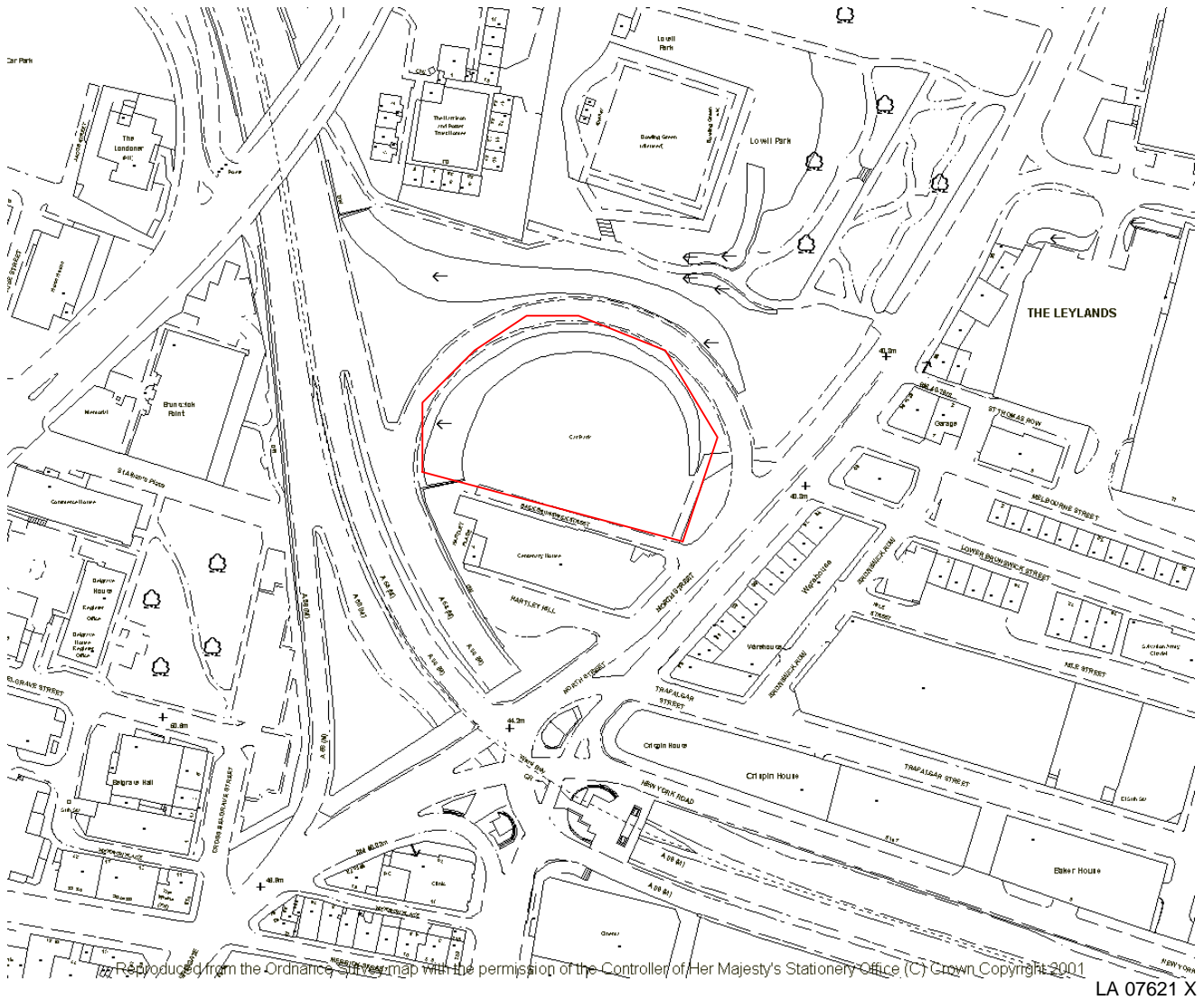
Red line includes the following properties:  
Crispin House and 5 to 7 New York Road

# The City of Leeds (Metropolitan District) (No.1) Air Quality Management Order, 2001

## Plan 4

Area surrounded by the red line has been designated as an Air Quality Management Area.

Scale 1:2500



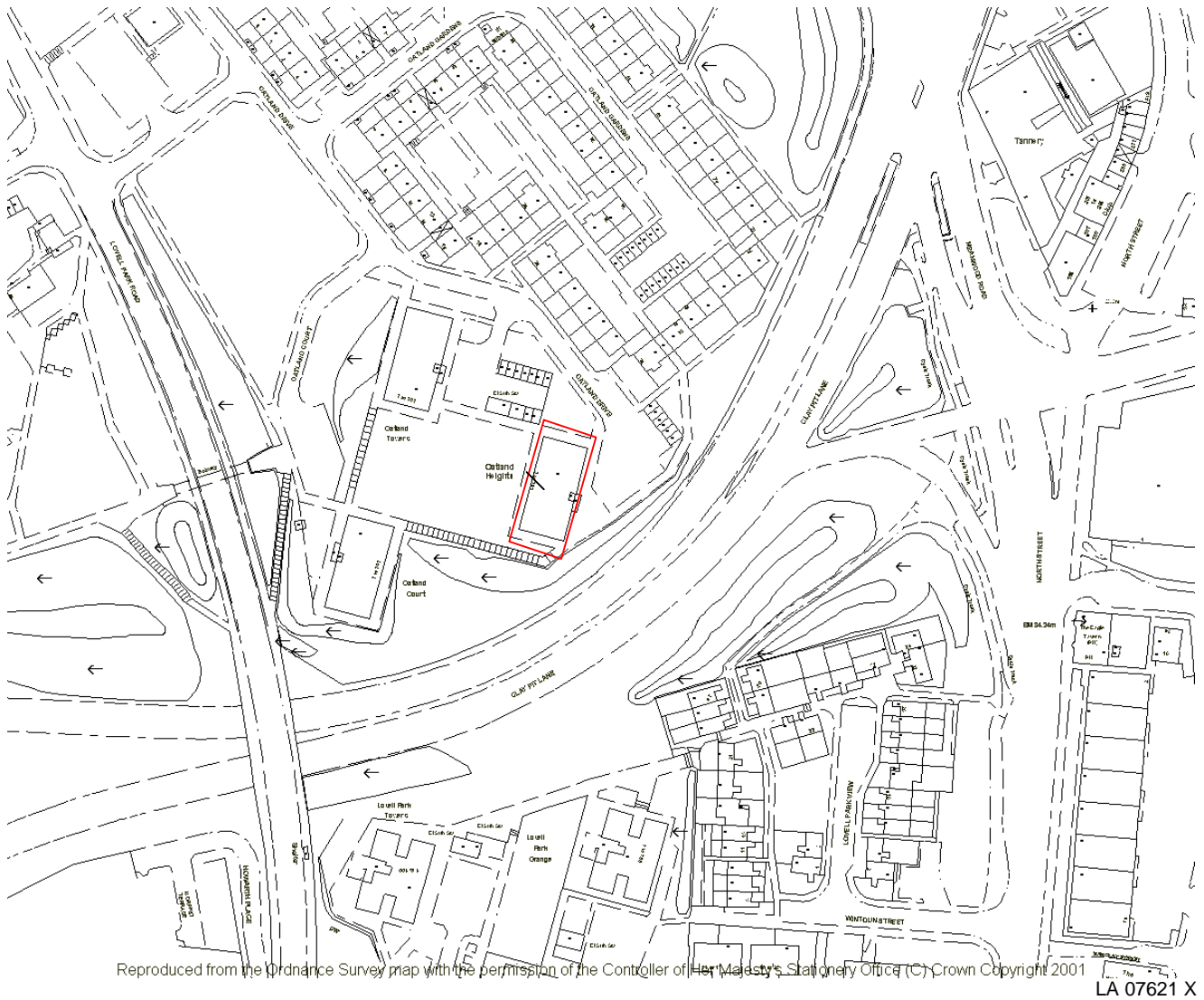
Red line includes the following properties:  
Caspar Apartments, 55 North Street

# The City of Leeds (Metropolitan District) (No.1) Air Quality Management Order, 2001

## Plan 5

Area surrounded by the red line has been designated as an Air Quality Management Area.

Scale 1:2500



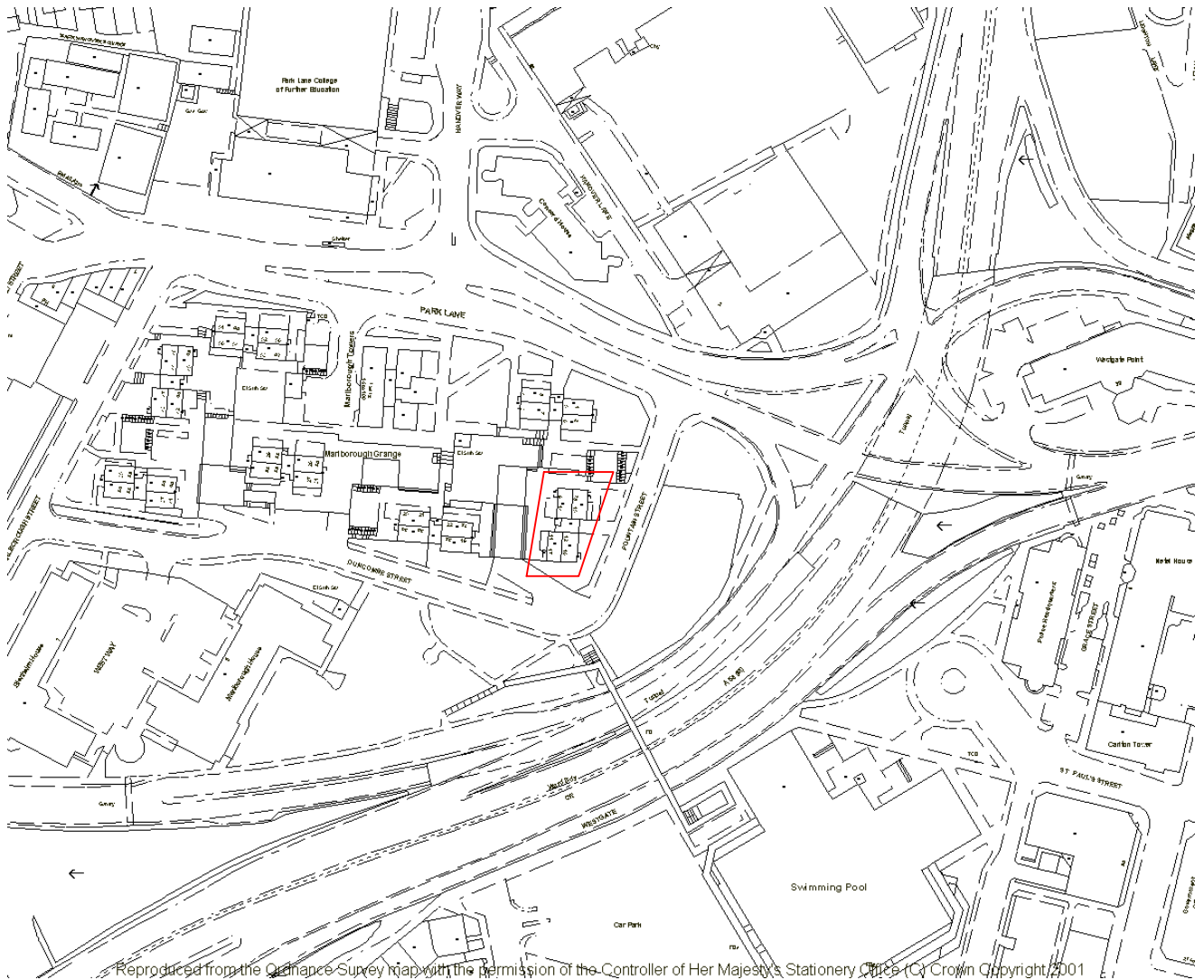
Red line includes the following properties:  
1 to 101 Oatland Heights

# The City of Leeds (Metropolitan District) (No.1) Air Quality Management Order, 2001

## Plan 6

Area surrounded by the red line has been designated as an Air Quality Management Area.

Scale 1:2500



LA 07621 X

Red line includes the following properties:  
9 to 17 Marlborough Grange

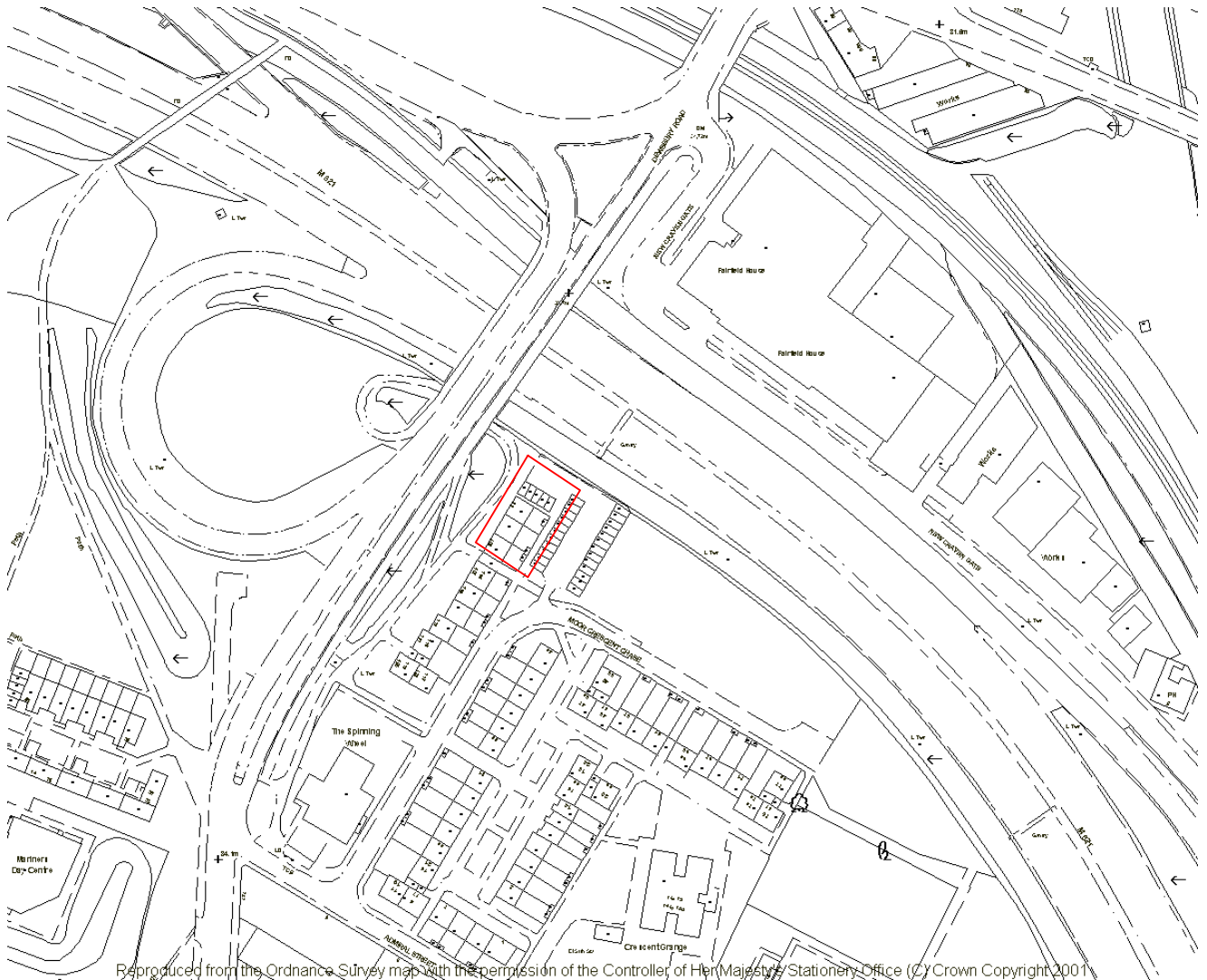


# The City of Leeds (Metropolitan District) (No.1) Air Quality Management Order, 2001

## Plan 7

Area surrounded by the red line has been designated as an Air Quality Management Area.

Scale 1:2500



LA 07621 X

Red line includes the following properties:  
99, 101 and 103 Dewsbury Road

Chief Legal Officer

**The City of Leeds (Metropolitan District) (No.2) Air Quality Management Order, 2001**

Area surrounded by the red line has been designated as an Air Quality Management Area.

Scale 1: 2500



LA 07621 X